



# MERLIN Plus SW

## EASY TO CUSTOMIZE AND INTUITIVE MEASURING SOFTWARE



Software

**Merlin Plus Software™** has been designed to simplify system configuration, measurement cycle definition and batch management.

Merlin Plus Software has been definitely outlined to fit simple manual applications and supports most of the Marposs measuring devices, as well as some third-party devices, connected via RS232, USB, Ethernet or Bluetooth®.

Displacement  
Sensors



Bore Gauges  
Line



Forks and  
Ring Gauges



Bench  
Gauges



Indicators and  
Electronic  
Display Units



Interface  
Boxes for Data  
Acquisition



Software



## MINIMUM REQUIREMENTS

**Merlin Plus Software** requires a Marposs Industrial Computer (Merlin Plus, Merlin Plus Box, E9066) or any Windows® compatible PC, with:

- Operating System: Windows 10™ or Windows 7™ ;
- RAM: 2GB (recommended 4GB for Windows 10™);
- Display: 1024x768 XVGa;
- Hard disk space: 3GB free.

## HOW TO ORDER

Description	Order code
Merlin Plus Software	BCM7000000E
Merlin Plus Designer	BCM7010000E
MRC - Marposs Remote Controller	BCM7030000E

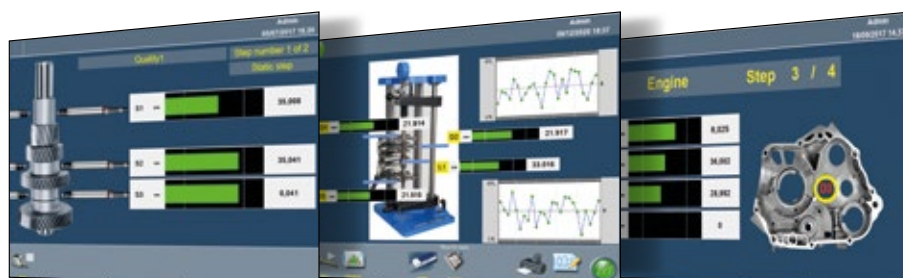
## Product features

Collecting data from a wide range of measuring devices, made by Marposs or third-parties, via USB, COM PORT, Ethernet or Bluetooth



Standard measurement pages

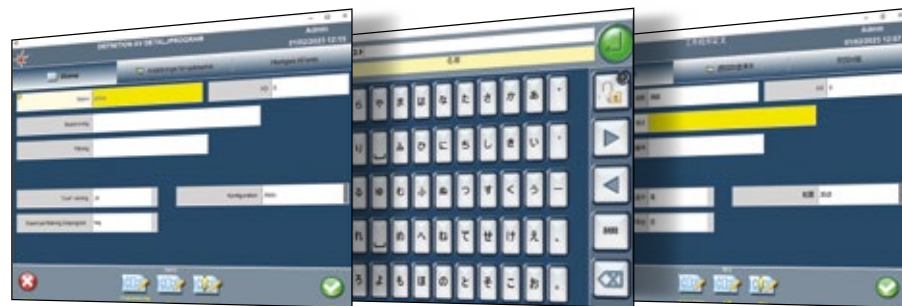
Customizable  
measurement pages



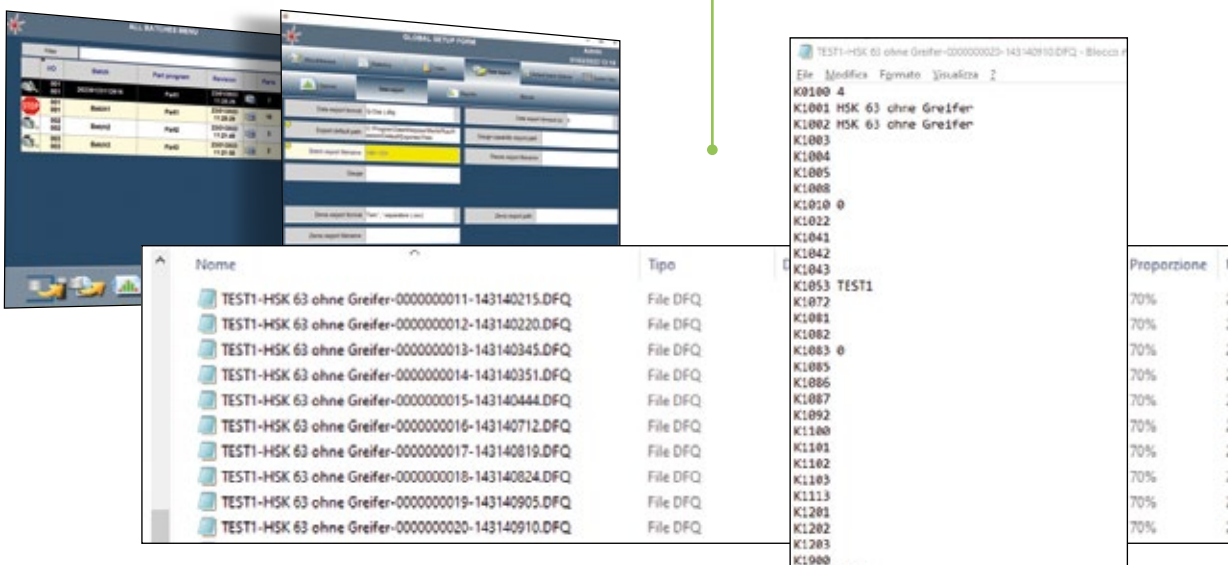


Data traceability

Multi-language support  
for European and Asian  
languages



Managing batches, data segregations, part counters and  
data storage in QDAS® (DFQ) or CSV format (including  
remote export on a network)



Displacement  
Sensors



Bore Gauges  
Line



Forks and  
Ring Gauges



Bench  
Gauges



Indicators and  
Electronic  
Display Units



Interface  
Boxes for Data  
Acquisition



Software





# THE PRODUCT LINE

Displacement  
Sensors



Bore Gauges  
Line



Forks and  
Ring Gauges



Bench  
Gauges



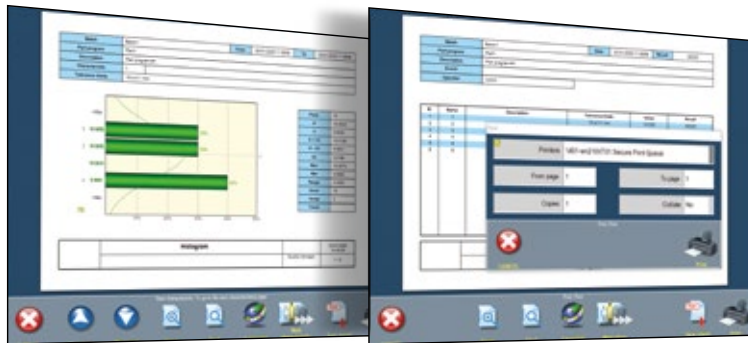
Indicators and  
Electronic  
Display Units



Interface  
Boxes for Data  
Acquisition



Software



Reports management in PDF  
format and printing capabilities

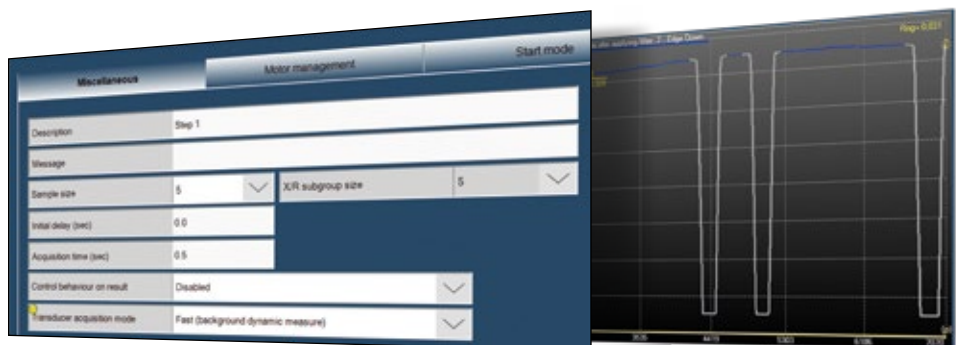
Statistical analysis with graphic  
display and numeric summary



Gauge capability and  
R&R studies facilities



Possibility of fast dynamic  
acquisitions (up to 4000  
samples/s) and filter utilities



# THE PRODUCT LINE



Multi monitor management  
(up to 3 additional monitors/projectors)



Displacement  
Sensors



Bore Gauges  
Line



Forks and  
Ring Gauges



Bench  
Gauges



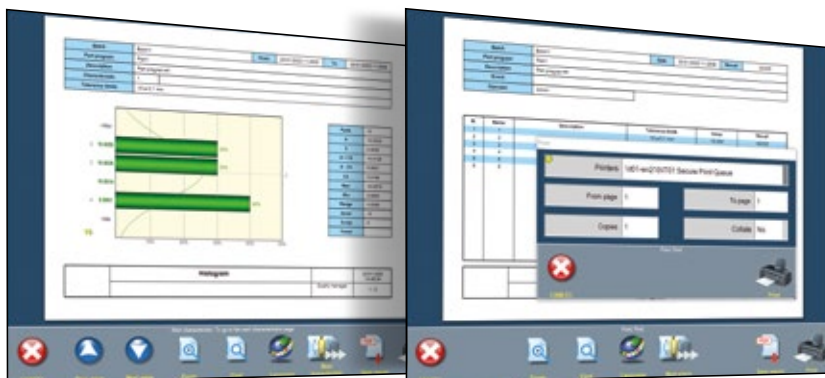
Indicators and  
Electronic  
Display Units



Interface  
Boxes for Data  
Acquisition






Software



Reports management in PDF  
format and printing capabilities

Table programming facility

Description	Units type	Units	U.M.	N.V.	R+	T+	T-	R-	Resolution	Colour
Group 1	Stem	mm	0.0000	0.1500				-0.1000	0.00001	
Group 2	Stem	mm	0.0000	0.2000				-0.2000	0.00001	
Group 3	Stem	mm	0.0000	0.1500				-0.1500	0.00001	

Name	Step	Group	N.V.	U.M.	Resolution	Units type	R+	T+	T-	R-	FW
A1	Step 1	Group 1	0.0000	mm	0.00001	Stem	0.1500			-0.1000	TGP001
A2	Step 1	Group 1	0.0000	mm	0.00001	Stem	0.1500			-0.1000	TGP002
A3	Step 1	Group 1	0.0000	mm	0.00001	Stem	0.1500			-0.1000	TGP003
A4	Step 1	Group 1	0.0000	mm	0.00001	Stem	0.1500			-0.1000	TGP004
A5	Step 1	Group 1	0.0000	mm	0.00001	Stem	0.1500			-0.1000	TGP005
A6	Step 1	Group 1	0.0000	mm	0.00001	Stem	0.1500			-0.1000	TGP006
C1	Step 1	Group 3	0.0000	mm	0.00001	Stem	0.1500			-0.1500	TGP007
C2	Step 1	Group 3	0.0000	mm	0.00001	Stem	0.1500			-0.1500	TGP008
C3	Step 1	Group 3	0.0000	mm	0.00001	Stem	0.1500			-0.1500	TGP009
C4	Step 1	Group 3	0.0000	mm	0.00001	Stem	0.1500			-0.1500	TGP010
C5	Step 1	Group 3	0.0000	mm	0.00001	Stem	0.1500			-0.1500	TGP011
C6	Step 1	Group 3	0.0000	mm	0.00001	Stem	0.1500			-0.1500	TGP012
C7	Step 1	Group 3	0.0000	mm	0.00001	Stem	0.1500			-0.1500	TGP013
B1	Step 1	Group 2	0.0000	mm	0.00001	Stem	0.2000			-0.2000	TGP014
B2	Step 1	Group 2	0.0000	mm	0.00001	Stem	0.2000			-0.2000	TGP015
B3	Step 1	Group 2	0.0000	mm	0.00001	Stem	0.2000			-0.2000	TGP016

# PROGRAMMING TOOLS

Displacement  
Sensors



Bore Gauges  
Line



Forks and  
Ring Gauges



Bench  
Gauges



Indicators and  
Electronic  
Display Units



Interface  
Boxes for Data  
Acquisition



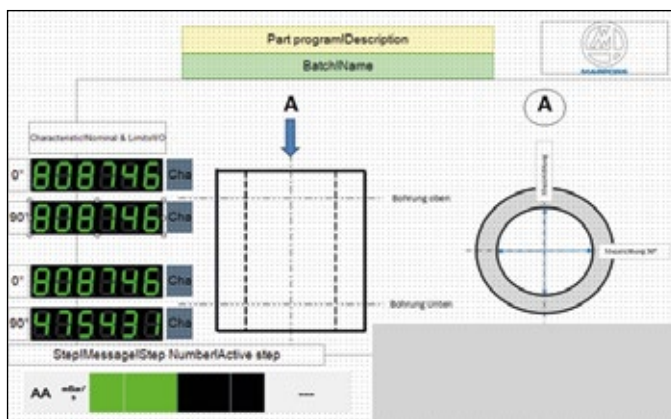
Software



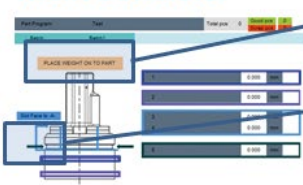
## MERLIN Plus Designer

Merlin Plus Designer™ can be used to create files that can be read from the Merlin Plus software so to customize the Measure pages, using various available objects such as measuring bars, images, blinking objects, graphs, charts or many others.

Customizing each Part program or each step with dedicated pages, can help in clarifying the measurement steps or in guiding the operator, thus avoiding errors in keeping production under control.



### Main controls:



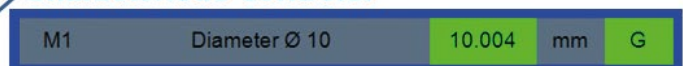
### Label:

PLACE WEIGHT ON TO PART

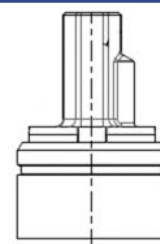
### Blink:



### Characteristic controls:



### Picture control:





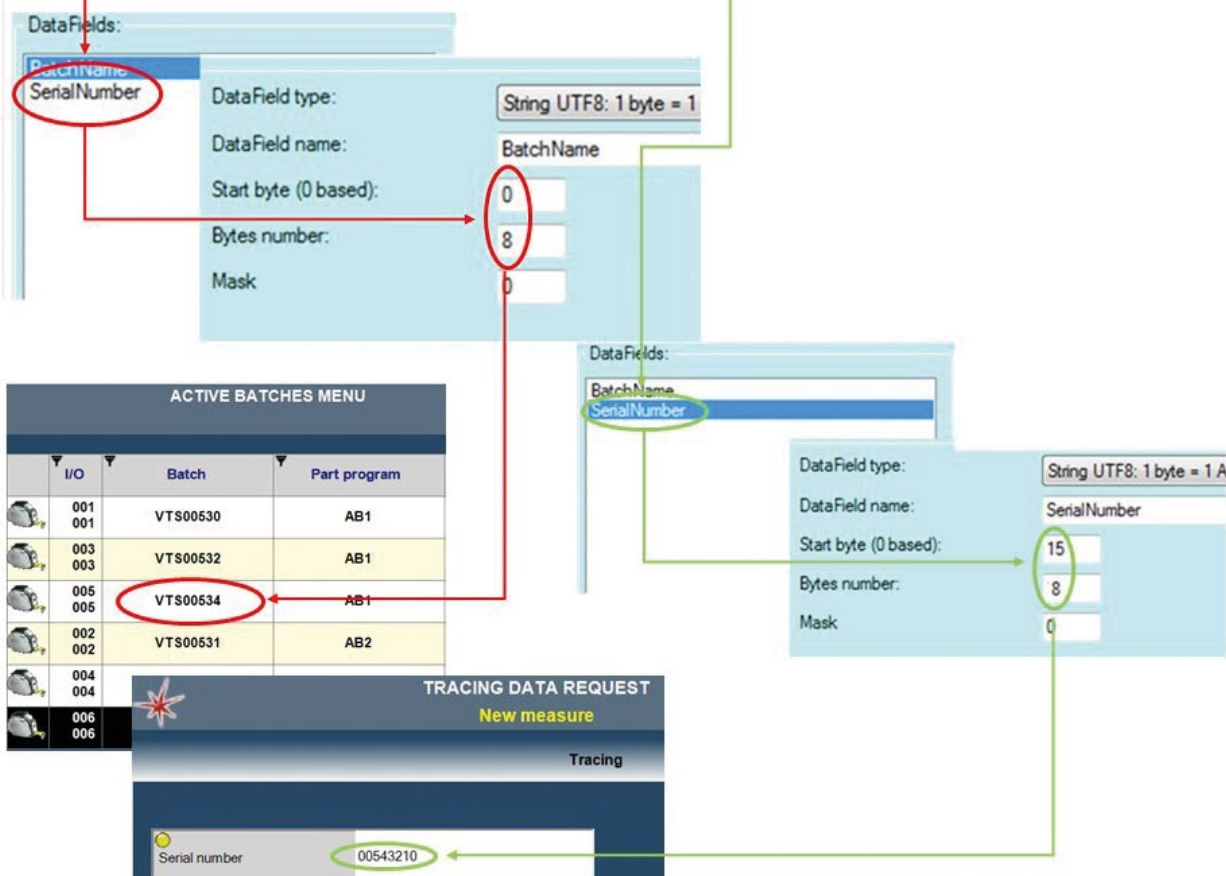


## MRC (Marposs Remote Controller)

MRC is a software that runs in background, connected to the Merlin Plus software and can be used to easily configure various behaviours like QR Code / Barcode readers management and FTP or SQL export management.



VT00534-05219-00543210



Displacement  
Sensors



Bore Gauges  
Line



Forks and  
Ring Gauges



Bench  
Gauges



Indicators and  
Electronic  
Display Units



Interface  
Boxes for Data  
Acquisition



Software



# PROGRAMMING TOOLS

Displacement  
Sensors



Bore Gauges  
Line



Forks and  
Ring Gauges



Bench  
Gauges



Indicators and  
Electronic  
Display Units



Interface  
Boxes for Data  
Acquisition



Software



Selecting parts of the string, different functions are activated.

Export of files to a remote path via FTP

Export of files to an SQL Server

Configuration of exported CSV files

Progressive num.	A: short name	A: description	A: measure unit	A: Nominal Value	A: Upper Toll. Limit	A: Lower Toll. Limit	A: Relative measure
1	A	mm		35,3	35,35	35,45	-0,0015